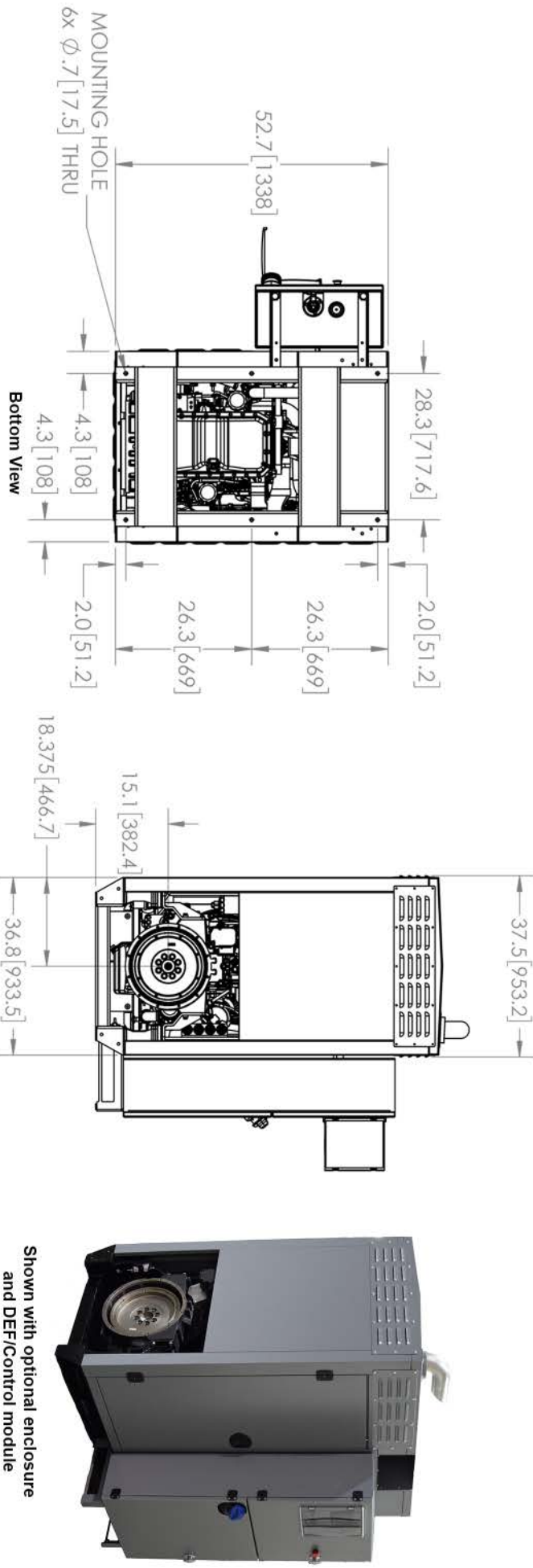
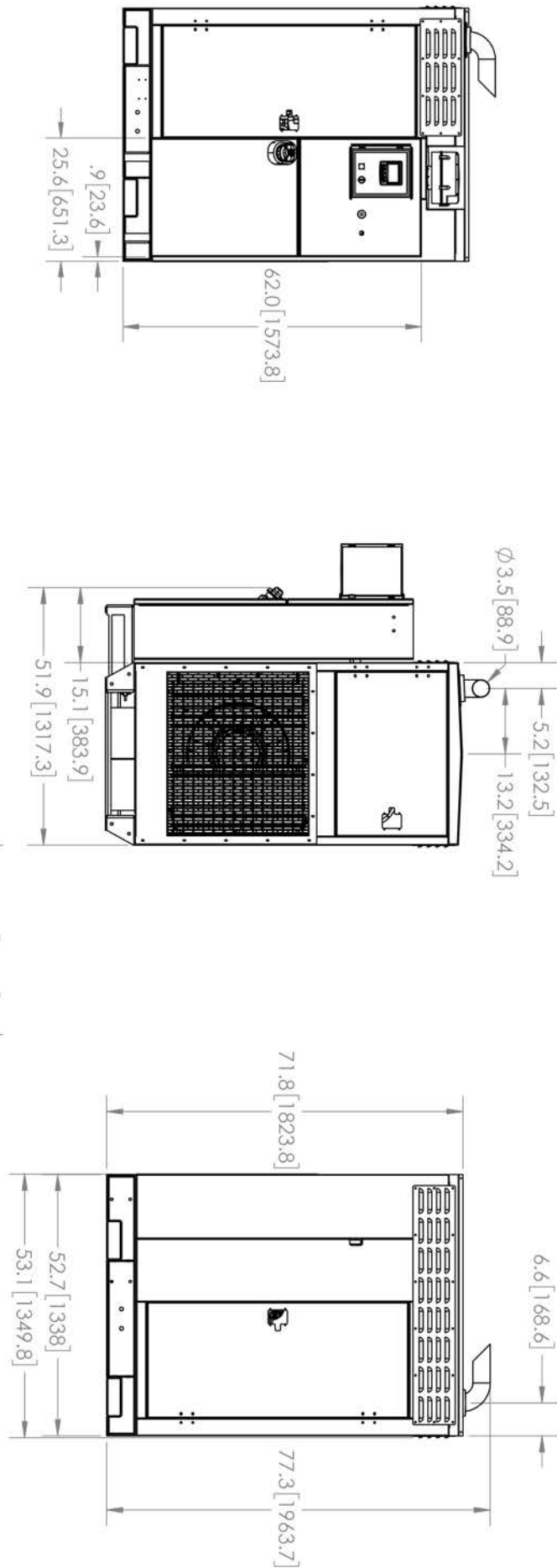
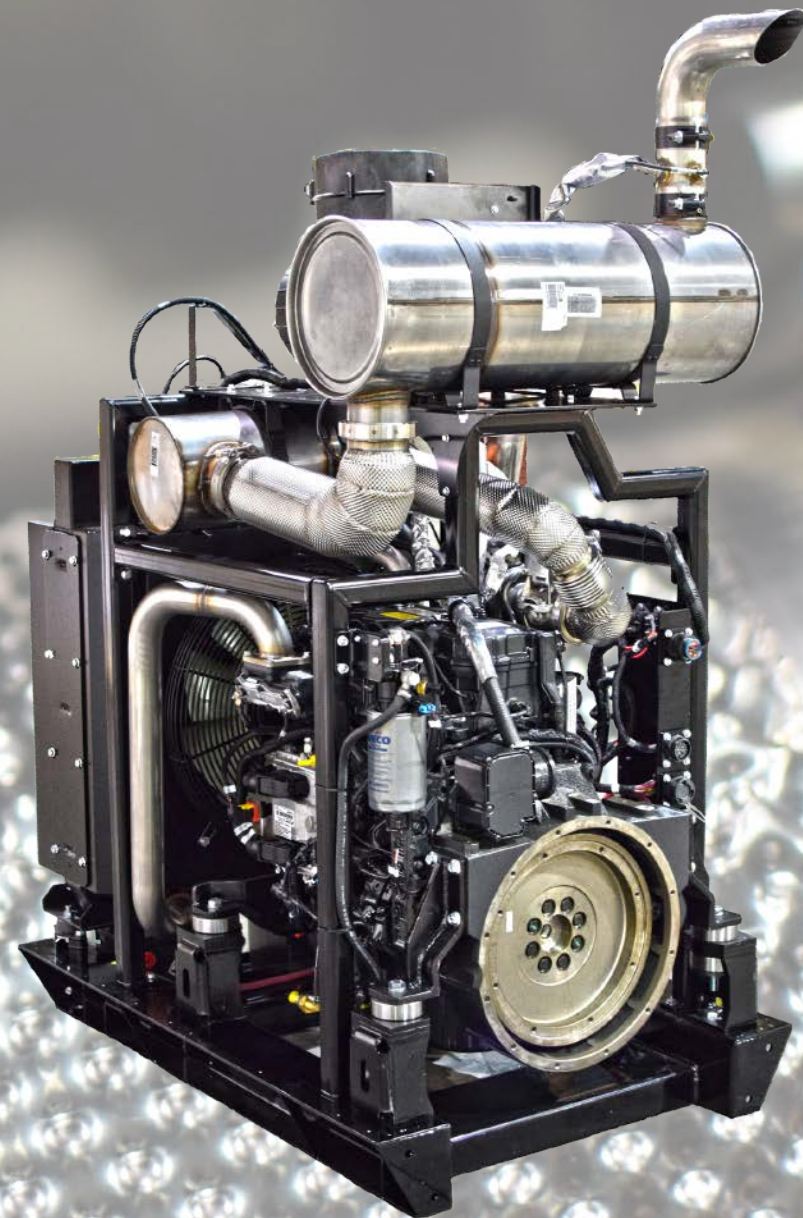


GRIZZLY

Powered by FPT

1190 | 1380 | 1680

TIER 4 FINAL
EURO STAGE IV



All measurements shown are in inches. (mm)

March 1st, 2017

Business:
Northern Power Products
Address: 2859 Lexington Ave. S.
Eagan, MN 55121

Phone: 651-452-8900
800-284-6247
Website: www.nppi.com



N45

The Grizzly Industrial Power Unit (IPU) is built to handle the most demanding jobs with the right features and options to simplify even the most difficult applications. Powered by the well-proven FPT N45, this Grizzly comes in three models, the 1190, 1380, and 1680 to cover your power requirements from 119 HP to 168 HP, net intermittent.

Technical Information

Grizzly Model	1190	1380	1680
Engine P/N	N45ENTHW21.50	N45ENTHW21.50	N45ENTHW20.50
Rated HP (kW) @ RPM	119 (89) @2200	138 (103) @ 2200	168 (125) @ 2200
FPT Engine Spec Sheet	P2G06CN030E	P2G06CN031E	P2G06CN032E
Emission Level	US EPA Tier 4F / EU Stage IV		
Design Ambient, Cooling System	120° F / 150° C		
Documents			
Options Manual	A-730-001		
Installation Manual	A-730-002		
Controls Manual	A-730-003		
Use & Maintenance Manual	A-730-004		
Repair Manual	A-730-005		
Parts Manual – N45	A-730-006		
3D CAD Model	A-730-010 (N45 Open), A-730-014 (N45 Enclosed)		
2D Dimensional Drawing – N45	A-730-018		
Electrical Drawing – N45	A-730-022		

Note: All printed material listed is supplemental to the standard FPT documents for the applicable engine and are specific to the Grizzly Power Unit. See your distributor account manager for proper installation and review.



Controls

All Grizzly IPUs feature the Murphy PV480 color display. In addition to the EPA T4F and Euro Stage IV mandatory annunciations, it provides maximum flexibility with several digital and analog inputs and outputs to offer auxiliary control of equipment functions, which may be programmed to suit your application. Visible in direct sunlight and with extreme environmental protection of -40° F to +185° F and IP67 water and dust intrusion rating both front and rear, the control is as durable as it is functional.

Markets and Applications

Grizzly Industrial Power Units (IPU) are designed to be the most rugged, reliable, and compact power units available. From the heavy-duty skid base, to the radiator, controls, and wiring, they are designed to provide exceptional service life in any application.

FORESTRY

Brush Chippers
Tub Grinders
Loaders/Forwarders

AGRICULTURE

Sludge Handling
Irrigation
Harvesters

CONSTRUCTION

Pumps
Heaters
Conveyers
Rock Crushers

POWER GENERATION

Standby
Prime
Mobile
Stationary

MATERIAL HANDLING

Cranes
Telehandlers
Sweepers
Tub Grinders



Shown with optional enclosure

Standard Content

FPT T4B/Stage IV Compliant NEF Series Engine	Heavy Duty Air Cleaner with Safety Element
SAE #3 Housing	Air Filter Restriction Switch
11.5" SAE Flywheel	24V Intake Air Pre-Heater
After Treatment System (ATS) with Muffler	Fuel Lift Pump, 24V
65L DEF Tank	Fuel Pre-Filter with Water Separator
Electrically Heated DEF Lines	Water-in-Fuel-Sensor
Solid Mounting	24V Starter
Heavy Duty Skid Base	90A, 24V Alternator
Pusher Fan	Wiring Harnesses, Engine, ATS, Controls
Radiator and Charge Air Cooler	Murphy PV480 Engine & ATS Controller & Display
Coolant Level Sensor	Engine Oil & Coolant Pre-Filled



Options

Sheet Metal Enclosure	Suction Fan
Enclosure Doors	Fan Clutch
Various DEF Tank/Control Panel Locations	Remote Control/Monitoring/Telematics
Controller Extensions Harness	Auxiliary Drive Pulley
Additional DEF Capacity	Over-Center PTO Clutch
High Capacity Alternator	Block Heater
Vibration Isolators	Batteries
Air Compressor	Air Intake Pre-Cleaner
Air Conditioning Compressor	Alternate Dipstick Locations
Cab Heat Connections	Remote Oil Filter
Skid Base & Enclosure Extensions for Driven Components	Auxiliary Hydraulic Pump Drive Adapters, SAE "A" or "B"



Features and Benefits

- Industry leading FPT engine
- No EGR, No DPF, No Regeneration, reduced heat rejection to coolant
- Complete and ready to run
- Minimal application review
- Heavy duty design and construction
- Meets the most demanding applications by using the best engineering and
- Many options to choose from making Grizzly flexible for every application
- Fully validated under the most severe conditions for long
- Simplified installation gets your application up and running as soon as possible
- **Two-Year Warranty**