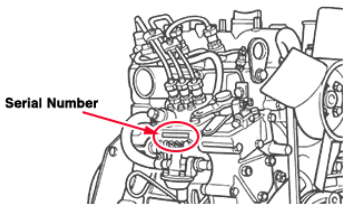


Where to Find the Kubota Engine Serial Number

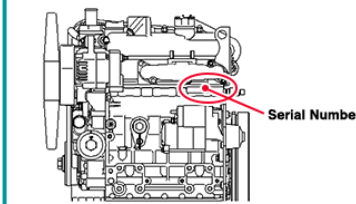
The Kubota Engine Serial Number is marked on the specified location per engine series as shown below.

Kubota Super Mini Series



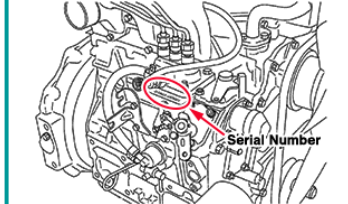
Located on the side of fixing point of injection pump

Kubota 05 Series



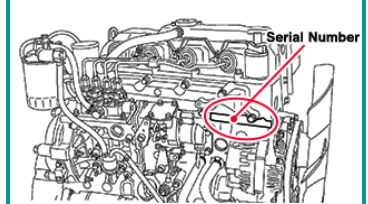
Below exhaust manifold
Over crankcase, flywheel side

Kubota 03 Series



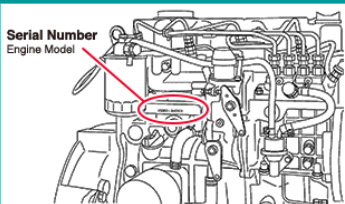
Located on the mounting surface of injection pump

Kubota 07 Series



Below intake manifold
Over crankcase, fan side

Kubota V3 Series



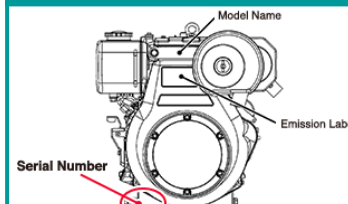
Below intake manifold
Over crankcase, flywheel side

Kubota EA/EL Series



Mounting surface at the gear case side

Kubota OC Series



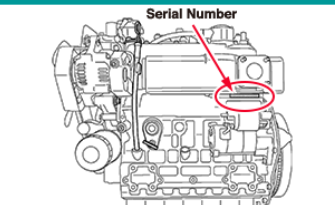
Mounting surface at fan side

Kubota WG Series (WG752/WG972)



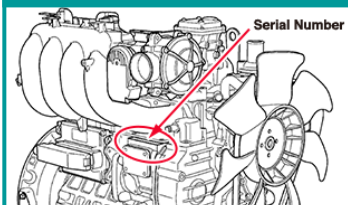
Located on the side of fixing point of injection pump

Kubota WG Series (WG1605)



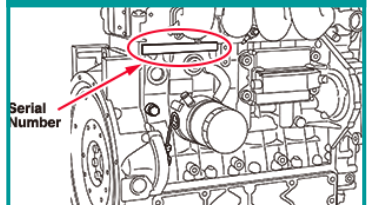
Below exhaust manifold
Over crankcase, flywheel side

Kubota WG Series (WG2503)



Located on the mounting surface of injection pump

Kubota WG Series (WG3800)



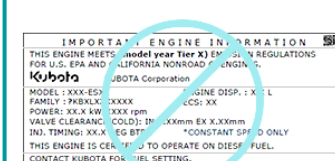
Below intake manifold
Over crankcase, flywheel side

All Engines (Engine Label)



Over cylinder head of engine

All Models (EPA Label)



Do not use the information shown on EPA labels.

Engines Manufactured Before June 2012

IMPORTANT: Always obtain the serial number when possible. The serial number can help determine the engine model and also help determine the correct service parts and changes based on serial number breaks.

4-6 Number Format

4-6 numbers that are sequential with no breaks for production month or year

6 Number Format (starting 1997)

Alpha-numeric (e.g. XJ5050 or 4J5050) with breaks for production month and year

FIRST DIGIT = PRODUCTION YEAR

1997	1998	1999	2000	2001	2002	2003	2004	2005	2006	2007	2008	2009
V	W	X	Y	1	2	3	4	5	6	7	8	9
2010	2011	2012	2013	2014	2015	2016	2017	2018	2019	2020	2021	2022
A	B	C	D	E	F	G	H	J	K	L	M	N

SECOND DIGIT = PRODUCTION MONTH

JAN	FEB	MAR	APR	MAY	JUN	JUL	AUG	SEP	OCT	NOV	DEC
A	C	E	G	J	L	N	Q	S	U	W	Y
B	D	F	H	K	M	P	R	T	V	X	Z

HOW TO DETERMINE THE ENGINE DATE OF MANUFACTURE

ENGINE SERIAL NUMBER: 8L1913

1st Digit	2nd Digit	3rd	4th	5th	6th
8	L	1	9	1	3
Production Year	Production Month	Production Sequence Number			
2008	JUNE	1913			

Engines Manufactured June 1, 2012 and After

New Engine Serial Number Rule (7 Digits)

Starting June 1, 2012 the engine serial number will have 7 digits and will be completely unique. This means that the engine serial numbers are mutually exclusive regardless of the production plant.

Production Plant

	Sakai			Rinkai			Tsukaba		P	K	E	T
Line Series	05 WG	V3 WG	08	SM WG	Air Cooled Gasoline	GZ, OC, AC, E	03 WG	07	T	K	I	T
Line No	1	2	3	4	5	6	7	8	A	B		

HOW TO DETERMINE THE ENGINE DATE OF MANUFACTURE

ENGINE INFORMATION: V2403—7EJ7031

1st	2nd	3rd	4th	5th	6th	7th
7	E	J	7	0	3	1
Production Data						
Plant	Year	Month	Sequence Number			
Tsukaba	2014	May	No. 7031			

Production Year

Year	1998	1999	2000	2001	2002	2003	2004	2005	2006	2007	2008	2009
Letter	W	X	Y	1	2	3	4	5	6	7	8	9
Year	2010	2011	2012	2013	2014	2015	2016	2017	2018	2019	2020	2021
Letter	A	B	C	D	E	F	G	H	J	K	L	M
Year	2022	2023	2024	2025	2026	2027						
Letter	N	P	R	S	T	V						

Production Month

Seq.No	JAN	FEB	MAR	APR	MAY	JUN	JUL	AUG	SEP	OCT	NOV	DEC
_0001~_9999	A	C	E	G	J	L	N	Q	S	U	W	Y
_0001~_Z999	B	D	F	H	K	M	P	R	T	V	X	Z

Note: The letters "I" and "O" are not used in any Kubota Engine Serial Numbers

Engine Serial Number Identification

ENGINES MANUFACTURED BEFORE JUNE 2012

IMPORTANT: Always obtain the serial number when possible. The serial number can help determine the engine model and also help determine the correct service parts and changes based on serial number breaks.

OLD FORMAT

4-6 numbers that are sequential with no breaks for production month or year

NEW FORMAT (starting 1997)

Alpha-numeric (e.g. XJ5050 or 4J5050) with breaks for production month and year

FIRST DIGIT = PRODUCTION YEAR

1997	1998	1999	2000	2001	2002	2003	2004	2005	2006	2007	2008	2009
V	W	X	Y	1	2	3	4	5	6	7	8	9
2010	2011	2012	2013	2014	2015	2016	2017	2018	2019	2020	2021	2022
A	B	C	D	E	F	G	H	J	K	L	M	N

SECOND DIGIT = PRODUCTION MONTH

Jan	Feb	Mar	Apr	May	Jun	Jul	Aug	Sep	Oct	Nov	Dec	
A	C	E	G	J	L	N	Q	S	U	W	Y	
B	D	F	H	K	M	P	R	T	V	X	Z	

* THE LETTERS "I" AND "O" ARE NOT USED IN SERIAL NUMBERS

ENGINES MANUFACTURED JUNE 1, 2012 AND AFTER

Engine Serial Number Rule (7 digits)

Starting June 1, 2012 the engine serial number will have 7 digits (currently 6 digits) and will be completely unique. This means that the engine serial numbers are mutually exclusive regardless of production plant.

e.g. Stamped Engine Serial Number

Before May 2012 Production

Base Model Name Serial Number(6 digits)

V3800-□△○○○○○

□ : Production Year

△ : Production Month

○○○○○ : Sequence Number

From June 2012 production

Engine Serial Number(7 digits)

V3800-☆□△○○○○○

☆ : Series Number

□ : Production Year

△ : Production Month

○○○○○ : Sequence Number

e.g. Standard Engine Serial Number

Base Model Name	Serial Number	
V3307	8 C M A001	
(a)	(b) (c) (d) (e)	
		(a) : Engine Model Name: V3307
		(b) : Engine Series: 8 indicates 07 series
		(c) : Year: C indicates 2012
		(d) : Month: L or M indicates June
		(e) : Sequence Number: (0001~9999 or A001~Z999)

ENGINE SERIES:

Number	Series
1	05 Series (Including WG)
2	V3 Series
4	SM Series (Including WG)
5	Air Cooled Gasoline
6	GZ, OC, AC, E Series
7	03 Series
8	07 Series

YEAR OF PRODUCTION:

Alphabet or Number	Year
1	2001
2	2002
3	2003
4	2004
5	2005
6	2006
7	2007
8	2008
9	2009
A	2010
B	2011
C	2012
D	2013
E	2014
F	2015
G	2016

MONTH OF MANUFACTURE

Month	Sequence number	
January	A0001~A9999	B0001~BZ999
February	C0001~C9999	D0001~DZ999
March	E0001~E9999	F0001~FZ999
April	G0001~G9999	H0001~HZ999
May	J0001~J9999	K0001~KZ999
June	L0001~L9999	M0001~MZ999
July	N0001~N9999	P0001~PZ999
August	Q0001~Q9999	R0001~RZ999
September	S0001~S9999	T0001~TZ999
October	U0001~U9999	V0001~VZ999
November	W0001~W9999	X0001~XZ999
December	Y0001~Y9999	Z0001~ZZ999